



HSP40 Mouse mAb(Mix-mA)

Catalog No	YP-Ab-04794
Isotype	IgG
Reactivity	Human; Mouse;Rat
Applications	IHC;WB
Gene Name	DNAJB1 DNAJ1 HDJ1 HSPF1
Protein Name	HSP40
Immunogen	Synthesized peptide derived from human HSP40
Specificity	This antibody detects endogenous levels of HSP40 at Human, Mouse,Rat
Formulation	Liquid in PBS containing 50% glycerol, 0.5% BSA and 0.33% sodium azide.
Source	Monoclonal, Mouse
Purification	The antibody was affinity-purified from mouse ascites by affinity-chromatography using specific immunogen.
Dilution	IHC-p1:50-200 ,WB 1:1000-2000
Concentration	1 mg/ml
Purity	≥90%
Storage Stability	-20°C/1 year
Synonyms	DnaJ homolog subfamily B member 1 (DnaJ protein homolog 1) (Heat shock 40 kDa protein 1) (HSP40) (Heat shock protein 40) (Human DnaJ protein 1) (hDj-1)
Observed Band	40kD
Cell Pathway	Cytoplasm . Nucleus . Nucleus, nucleolus . Translocates rapidly from the cytoplasm to the nucleus, and especially to the nucleoli, upon heat shock.
Tissue Specificity	Brain,Heart,Lung,Placenta,
Function	function:Interacts with HSP70 and can stimulate its ATPase activity. Stimulates the association between HSC70 and HIP.,induction:By heat shock.,similarity:Contains 1 J domain.,subcellular location:Translocates rapidly from the cytoplasm to the nucleus, and especially to the nucleoli, upon heat shock.,subunit:Interacts with DNAJC3.,
Background	This gene encodes a member of the DnaJ or Hsp40 (heat shock protein 40 kD) family of proteins. DNAJ family members are characterized by a highly conserved amino acid stretch called the 'J-domain' and function as one of the two major classes of molecular chaperones involved in a wide range of cellular events, such as protein folding and oligomeric protein complex assembly. The encoded protein is a molecular chaperone that stimulates the ATPase activity of Hsp70 heat-shock proteins in order to promote protein folding and prevent misfolded protein aggregation. Alternative splicing results in multiple transcript variants. [provided by RefSeq, Sep 2015],



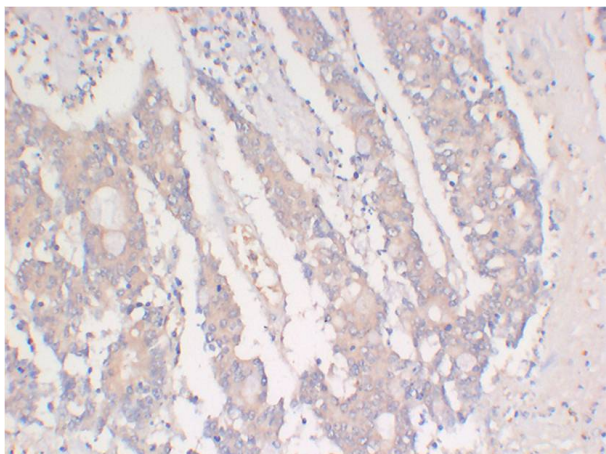
matters needing attention

Avoid repeated freezing and thawing!

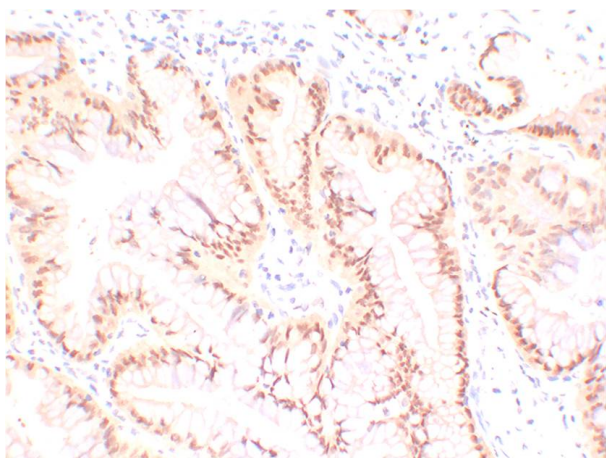
Usage suggestions

This product can be used in immunological reaction related experiments. For more information, please consult technical personnel.

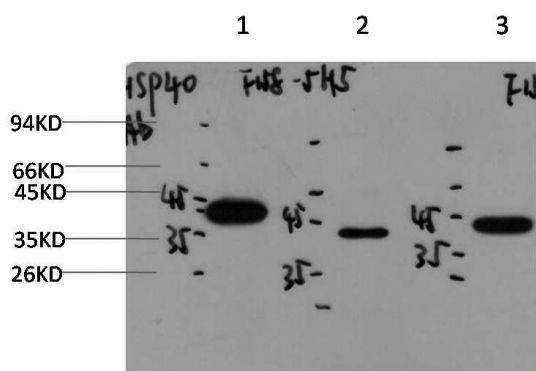
Products Images



Immunohistochemical analysis of paraffin-embedded Human Colon Carcinoma Tissue using HSP40 Mouse Monoclonal antibody diluted at 1:200.



Immunohistochemical analysis of paraffin-embedded Human Lung Carcinoma Tissue using HSP40 Mouse Monoclonal antibody diluted at 1:200.



Western blot analysis of 1)Hela Cell, 2) Mouse Liver, 3) PC12 Cell Lysate using HSP40 Mouse Monoclonal mAb diluted at 1:2,000.